

Welcome to join MLIS 2022!

## MLIS 2022

### Main Topics

The topics include but are not limited to:

Data Mining  
Image Processing  
Neural Networks  
Natural Language Processing  
Computational Intelligence  
Expert Systems  
Human Computer Interaction  
Deep Learning  
Robots

### Publications

- ★ Frontiers in Artificial Intelligence and Applications (FAIA) (EI/Scopus Conf. Proceeding)
- ★ Evolutionary Intelligence (EI/Scopus)
- ★ Discrete Dynamics in Nature and Society (IF: 0.870)

## About MLIS

MLIS conference is convened annually to provide a platform for knowledge exchange of the most recent scientific and technological advances in the field of machine learning and intelligent systems, and to strengthen the links in scientific community in related field. For participants who are not able to join physically, **online presentations via Microsoft TEAMS** will be available and welcome.



With the support from National Dong Hwa University, Keimyung University and Huaqiao University, MLIS 2019, 2020 and 2021 were held successfully with more than 300 participants from more than 25 countries worldwide.



Past Conference Galleries

# MLIS 2022

November 8th-11th Seoul, Korea



## Important Dates

- ★ Submission Deadline:  
July 20th, 2022
- ★ Registration Deadline:  
September 30th, 2022

Kindly submit related abstract/full paper via MLIS online submission system...

## Contact

Conference Secretary  
Yana Shi

TEL: +86 13618614937

EMAIL: [info@machinelearningconf.org](mailto:info@machinelearningconf.org)

Website



Wechat



# INVITATION

The 4th International Conference on  
Machine Learning and Intelligent  
Systems (MLIS 2022)



KEIMYUNG  
UNIVERSITY



## N Seoul Tower

- One of the most popular ways to see Seoul's skyline

Since opening to the public in 1980, it has become a much-loved Seoul landmark. The tower's main attractions include multi-colored digital art projected onto the tower at night, a digital observatory, a roof terrace, the HanCooks restaurant etc. Seoul has a number of viewing platforms where visitors can enjoy the nighttime cityscape or gaze out onto the Hangang (River) but the tower's Digital Observatory is unique, offering an astonishing 360 degree panorama over the city, and 32 LCD screens recounting the 600-year history of Seoul. Namsan Seoul Tower's mountain surroundings on Namsan Mountain have made it a popular place to unwind for locals and tourists.

## Technical Program Committee

### General Chair

Prof. Jong-Ha Lee, Keimyung University, Korea

### Local Committee

Prof. Chang-Hee Won, Temple University, USA  
 Prof. Shivendra Panwar, New York University, USA  
 Prof. Joo-Beom Eom, Dankook University, South Korea  
 Prof. Dae-Yu Kim, Inha University, South Korea  
 Prof. Qun Wei, Keimyung University, South Korea

## Invitation

Considering the current Covid condition, a **hybrid mode of online and onsite presentations will be conducted.**

The plenary session of MLIS2022 will include Keynote Speeches, Invited Speeches, Poster Presentations and Oral Presentations with program as below:

## Agenda

Date	Schedule
November 8th	Registration
November 9th	Opening Ceremony, Keynote and Oral Presentations
November 10th	Invited, Oral and Poster Presentations
November 11th	Field Visit

## Participation Types

- ★ Oral Presentations: Invited & Regular Oral;
- ★ Poster Presentations;
- ★ Exhibition: Journals, Instruments;
- ★ Other Types: Listen, Co-author, Accompany Person etc

## Invited Speakers



Prof. Jon-Lark Kim  
Sogang University, Korea



Prof. Richi Nayak  
Queensland University of Technology, Australia



Dr. H. Taherdoost  
University Canada West, Canada



Prof. R. S. Hegadi  
Central University of Karnataka, India

More speakers are to be updated soon...

## Technical Program Committee

Prof. Luis Anido Rifon, University of Vigo, Spain  
 Prof. Giuseppe Bonifazi, University of Rome, Italy  
 Prof. Jon-Lark Kim, Sogang University, South Korea  
 Prof. Habib F. Rashvand, University of Warwick, UK  
 Prof. Stefania Tomasiello, University of Tartu, Estonia  
 .....  
 More could be found via the conference website

## Explore Seoul's Charm

From old to new, explore all that the city has to offer.

From old to new, explore all that the city has to offer. Visit the best shopping districts, the top historical sites, and the places with the best views of the city skyline. Whether you prefer modern architecture or the charm of the royal palaces, there is something for everyone!

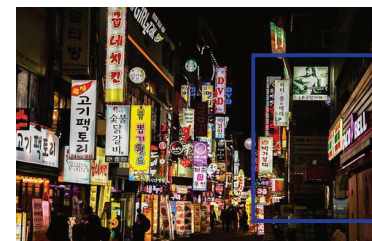


Seoul

Seoul has been a major site of modern architectural construction—major modern landmarks include the N Seoul Tower, the 63 Building, the Lotte World Tower and the Parc1 Tower.



Also the birthplace of K-pop and the Korean Wave, Seoul received a huge number of international visitors recent years, making it the world's 9th most visited city and 4th largest earner in tourism.



Myeongdong

Welcome to Seoul  
 Welcome to join MLIS 2022